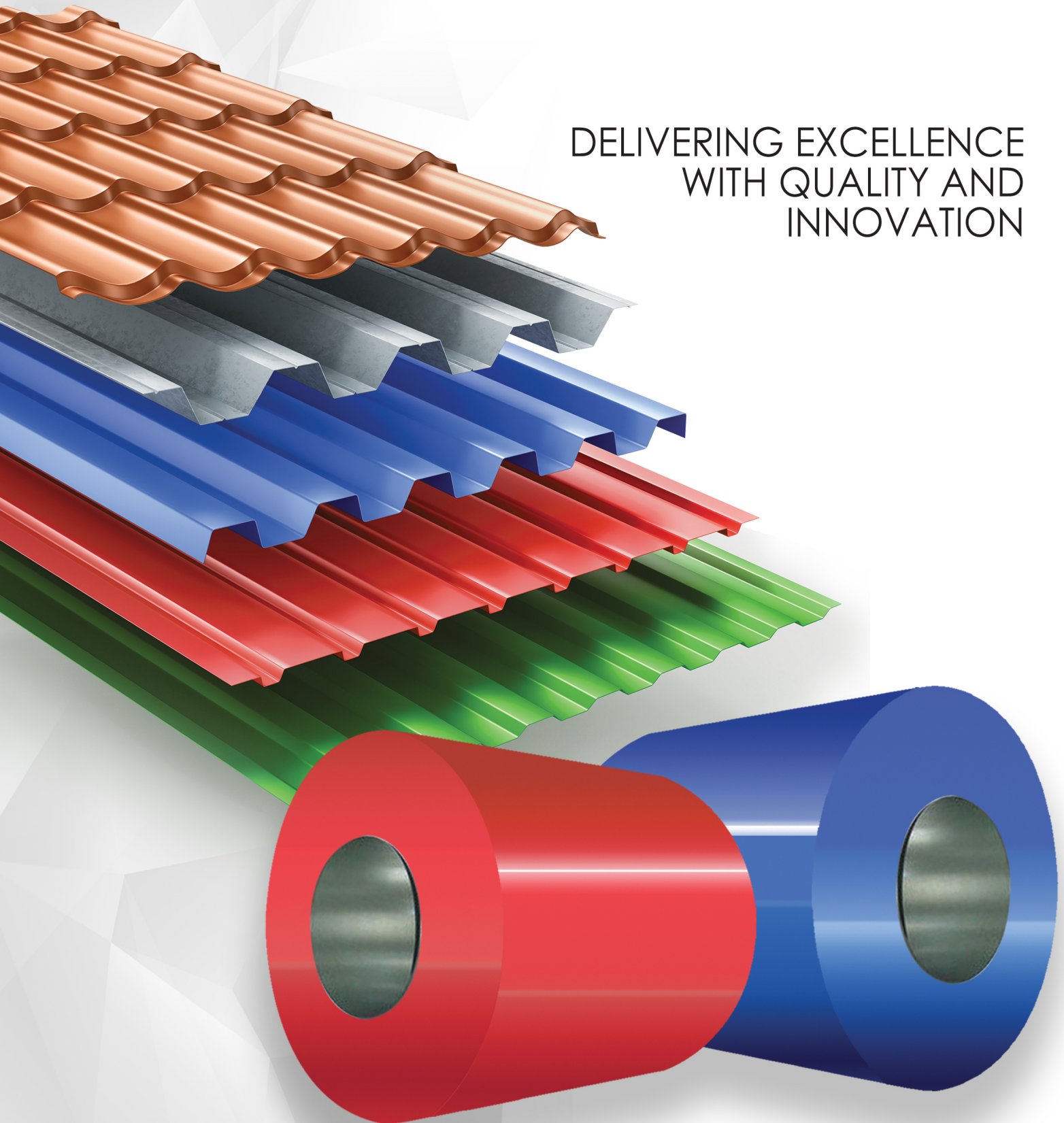




DELIVERING EXCELLENCE
WITH QUALITY AND
INNOVATION





Roofing Sheets are one of the most important material required for Building Construction project. We introduce our Brand ColourLife™ a unit of SHREE LAKHI METALS & STEELS PVT. LTD. (An ISO 9001:2015 Certified Company). The unit is focused on producing high quality Colour Coated Profile Roofing Sheets. The Company is the leading manufacturer & supplier in Eastern India.

Proud to 'Make in India'.

Mr. Gopal Chandgothia, DIRECTOR



“He who is courageous enough to take risk will accomplish in Life”, these are simple yet valuable words which very well explains Mr. Gopal Chandgothia's business attitude. He is a man with outstanding wisdom leadership & business ethics. He entered into the Iron & Steel business in the year 1985. With his great belief in god & he is a great devotee of Lord Krishna. He gives all his achievement and credit to his spiritual refinement.

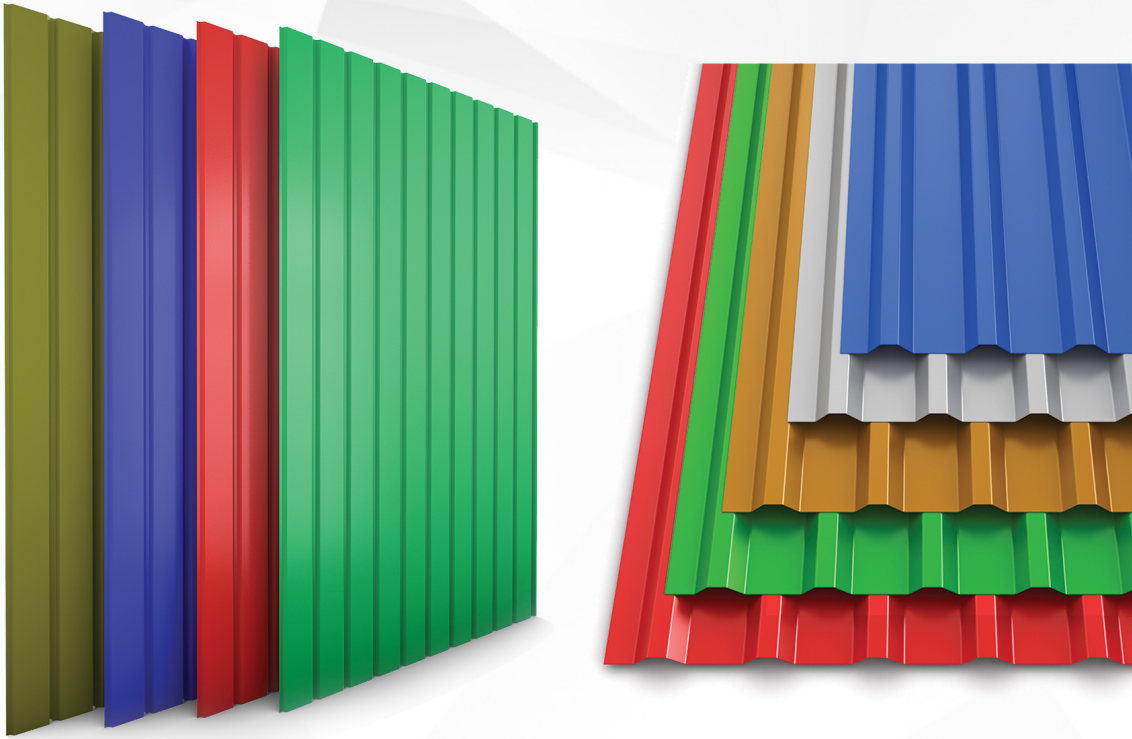
Mr. Kaushal Chandgothia, DIRECTOR

“Delivering Excellence with Quality & Innovation” is the principal on which Mr. Kaushal Chandgothia joined the business in the year 2014. He earned his masters degree from United Kingdom. Under his leadership the company has started with the brand ColourLife™. His Mission is to provide high quality steel products, related services & maximum value for the customers.



COLOURLIFE COATING

COLOURLIFE	PPGI	PPGL
Al-Zinc Coating (gsm)	Z-80	AZ – 70 - 150
Top Coating (μ)	15	20
Back Coating (μ)	6	6



PRODUCT SPECIFICATIONS

COIL FORM	PPGI / PPGL
Thickness (mm)	0.15 – 1.2
Width (mm)	900 – 1450
Coil Weight (mt)	2 - 10 (4 mt with guard film)
Substrate	Al-Zinc Alloy Steel/ Galvanized
Al-Zinc Alloy Steel (gsm)	AZ – 70 - 150
Zinc (gsm)	Z - 80
Hardness	350 mpa – 550 mpa
Guard Film	35 μ
Standards	ISO 9001 : 2015 Certified

MAJOR APPLICATION AREAS

Factory Shades	Bus Stand Shades
False Ceiling	Residential Roofing & Cladding
Door Framing	Warehouses & Cold Storages
Industrial Roofing & Cladding	Appliances



AN EDGE OVER OTHERS

Authenticity & Genuineness.
Superior product quality.
Saving through better yield.
Wide range of grades, thickness & widths.
Quick response & prompt redressal of problem.
Opportunity to differentiate your product on the basis of raw material source.
Better Value for your products.
Prompt delivery at doorstep.

PARENT COMPANY

SHREE LAKHI METALS & STEELS PVT. LTD.

Shree Lakhi Metals & Steels Pvt. Ltd. is a distribution house of iron and steel from the past 35 years. The company is the loyal distributor of JSW Steel Ltd., Uttam Value Steel Ltd., SAIL, Jindal India Ltd., Bhushan Power & Steel Ltd., Visaka Industries Ltd., Asian Colour Coated Ispat Ltd. (ACCIL), National Steel & Agro Industries Ltd. It is also into import and export of iron and steel. The company deals in the following products:

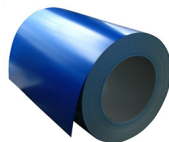
HR/CR



GP/GC



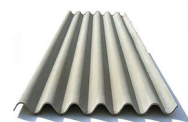
PPGL/PPGI



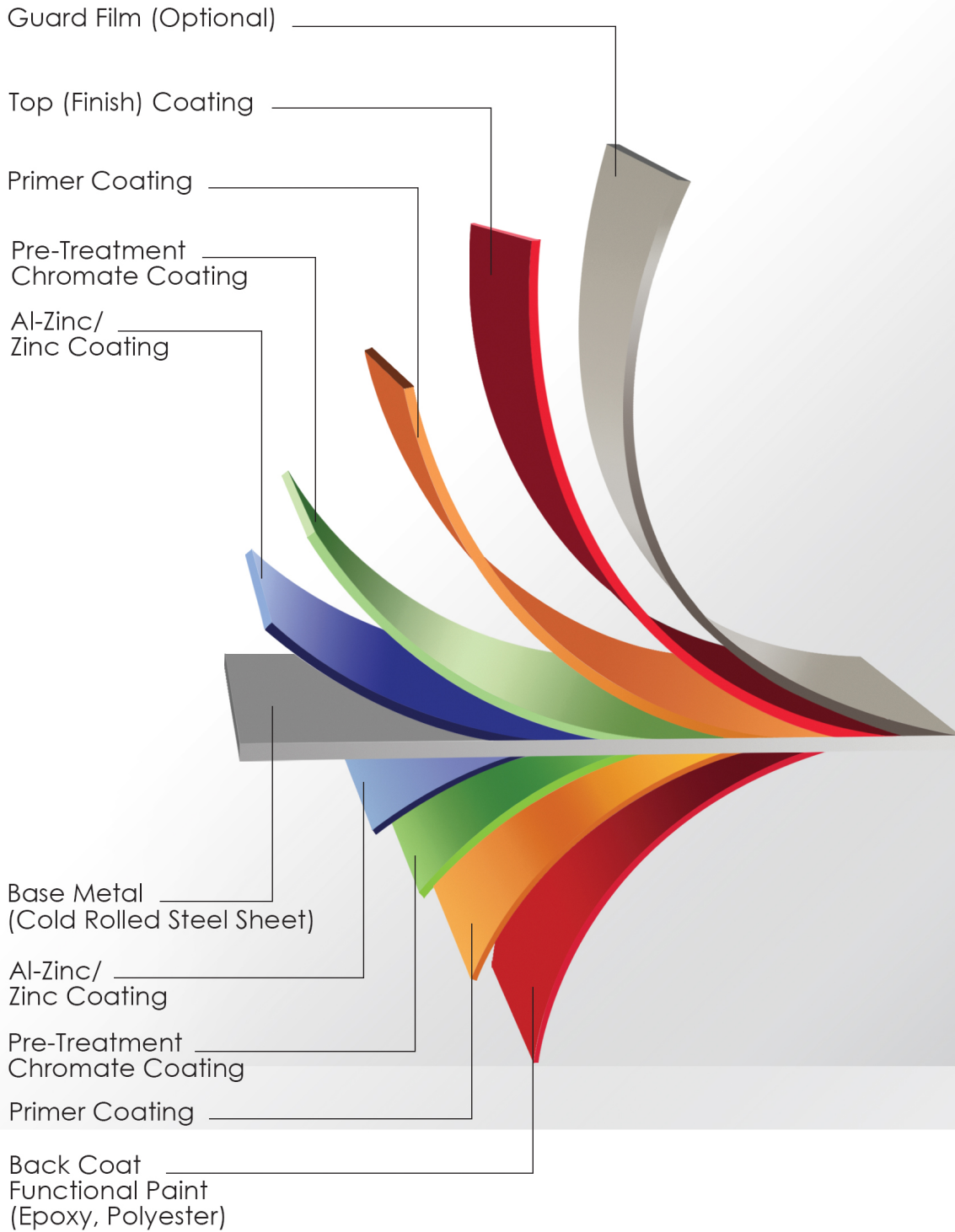
Pipe



Asbestos



ADVANCED PAINT TECHNOLOGY



SHADECARD

STANDARD COLOUR RANGE



RAL 1003
Signal Yellow



RAL 1023
Traffic Yellow



RAL 2009
Traffic Orange



RAL 2010
Signal Orange



RAL 3020
Traffic Red



Seco Red



Brick Red



RAL 4008
Signal Violet



RAL 5005
Signal Blue



RAL 5012
Light Blue



RAL 5017
Traffic Blue



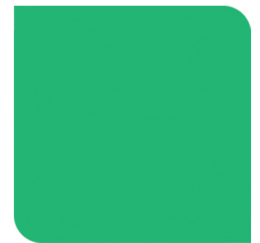
Pepsi Blue



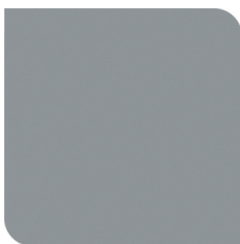
Nuvo Blue



Caulfield Green



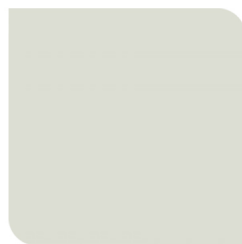
Environmental Green



RAL 7042
Traffic Grey



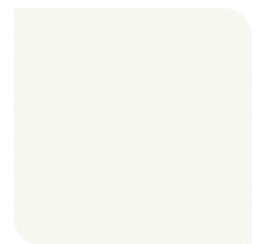
RAL 8017
Chocolate Brown



RAL 9002
Grey White



RAL 9003
Signal White



RAL 9010
Pure White

Colours may vary from the shades shown above.

SHREE LAKHI METALS & STEELS PVT. LTD.

Head Office: 8C, Maharshi Debendra Road, 3rd Floor, Kolkata- 700007

Branches: Lohamandi, Agamkuan, Patna, Bihar- 800007

5, Co-operative Colony, Bokaro Steel City, Bokaro- 827001

Depot: NH-31, Zero Mile, Gulabbagh, Purnia, Bihar- 854236